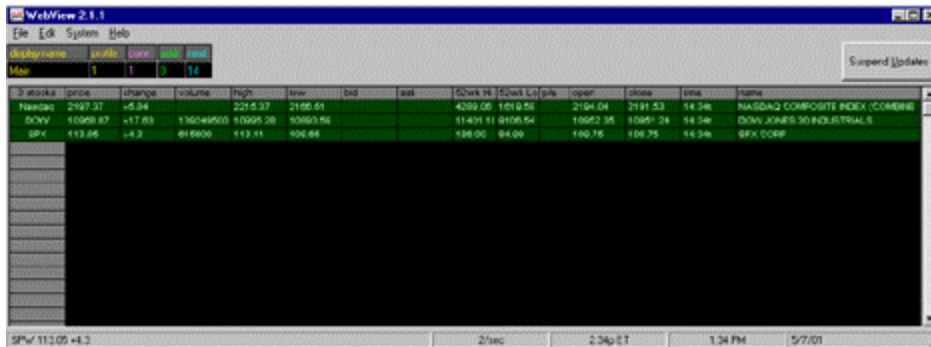


Your Username: acom00xx
Your Password: xxxx

WebViewIQ™

User's Manual



The screenshot shows the WebView 2.1.1 application window. The title bar reads "WebView 2.1.1". The menu bar includes "File", "Edit", "System", and "Help". Below the menu bar, there are buttons for "Display Name", "Profile", "View", and "View", along with a "Suspend Updates" button. The main area displays a table of stock market data with the following columns: # stocks, price, change, volume, high, low, bid, ask, 52wk H, 52wk L, %ytd, open, close, time, and name. The table contains three rows of data:

# stocks	price	change	volume	high	low	bid	ask	52wk H	52wk L	%ytd	open	close	time	name
Nasdaq	2197.37	+5.94		2215.37	2185.51			4289.08	1619.58		2194.04	2191.53	11:34a	NASDAQ COMPOSITE INDEX (COMBINE
DOW	10960.87	+17.83	13624900	11095.28	10893.58			11431.11	9105.54		10952.35	10951.24	11:34a	DOW JONES 30 INDUSTRIALS
SPX	113.85	+1.2	816900	113.91	109.85			108.00	84.08		109.78	109.75	11:34a	SPX CORP

The status bar at the bottom of the window shows "SPW 11:05 +4.3", "2/sec", "2:34:21", "1:34 PM", and "5/2/01".

Contents

1. Product Information	1
What is WebViewIQ?	
WebViewIQ Versions	
System Requirements	
Frequently Asked Question	
2. Display Setup	2
Setting up WebViewIQ to work with your sign	
3. Stock Setup	4
Setting up and using profiles	
Finding/Choosing stocks to display	
4. Message Setup	6
Getting more than just stocks on your display	
5. Bringing it together	7
Getting everything to work together	
Added features	

What is WebViewIQ™?

WebViewIQ, the “Intelligent Ticker,” is a ticker service which updates indoor and outdoor electronic message displays via the internet. Using an Internet connection to retrieve current information, users have the power to select the stocks, indexes and news they want to follow.

WebViewIQ version:

WebViewIQ is available for many display manufacturers, and offers several different service options:

- 100 Stocks or Indexes (P/N WebViewIQ-100)
- 300 Stocks or Indexes (P/N WebViewIQ-300)
- Newswire (P/N WV-BW)
- Businesswire (P/N WV-BW)
- Sportswire (P/N WV-SW)

System Requirements:

Minimum requirements:

Pentium 100
16MB RAM
50MB Free HDD Space
Internet Connection*

Recommended:

Pentium 233+
32MB RAM
75MB Free HDD Space
Internet Connection*

*Recommended Internet connection is an “always on” system

Display Setup

The **Connections** selection from the **Edit** menu allows you to set up WebViewIQ to work with your sign. Within the window there are several settings that you may or may not need to change.

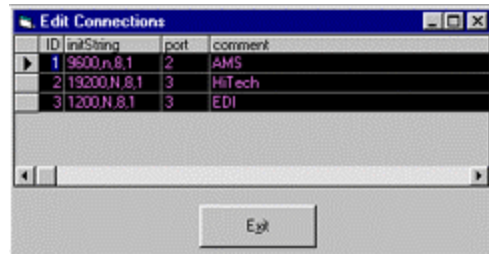


Fig. 1

In the Connections window (fig. 1) there are 2 different settings of note, Com Port settings; if your sign is plugged into Com1, be sure that the **commPort** settings in the right column read '1'.

If you are running an AMS display the ID1 setting contains the proper settings needed to communicate with your display.



Fig. 2 – AMS configuration

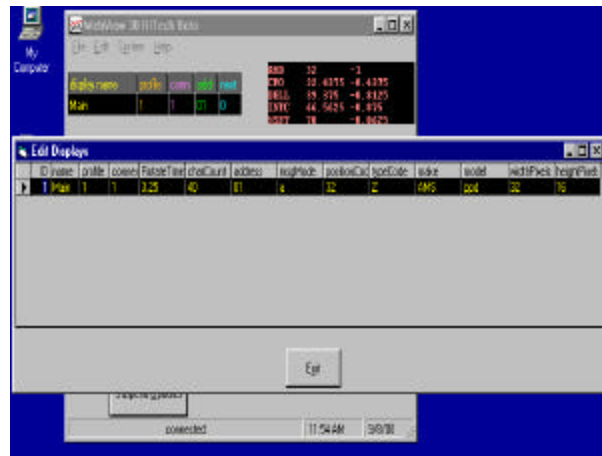
If you are running a Hi*Tech display the ID2 setting is used to communicate with your display.



Fig. 3 – Hi*Tech configuration

The ID number on the left simplifies these setting. AMS displays use ID=1 and Hi*Tech use ID=2.

The **Displays** area is used to create new sites where the stock information will be sent. If a display has unique information, the display should have it's own entry in the displays section.*



**Currently end users cannot add their own displays, the addition must be made prior to shipment, or through an update.*

Display settings:

ID	name	profile	conn	make	model	address	RotateTim	charCount	msgMode	positionCo	typeCode	widthPixel	heightPixe	brightness	scrollspee
1	Main	1	1	AMS	PPD	01	3.25	40	a	32	Z	32	8	1	3

- ID: The numerical representation of each sign.
- Name: A 'user friendly' title given to the sign.
- Profile: The profile to be displayed on that particular display.
- Connection: Com port ID (usually 1 or 2)
- Make: The manufacturer of your display.
- Rotation Time: * This is a predetermined number of seconds one character takes to scroll across the display.
- Character Count: * The number of characters that fit on a display at one time.
- Display Address: The Serial Address of the sign.
- Message Mode: * The way characters are presented on the display.
Default is "a" = rotate
- Position Code:* The position of the characters on the display
Default is 32 = fill
- Type Code:* The type of display.
Default is 'Z' used only with AMS displays.
- Make: Hi*Tech or AMS
- Width and Height: **The display pixel width and height.
- Brightness: Directly Adjusts the brightness of the display
- Scroll Speed: * Adjusts the speed at which the information rotates across the display
- IDAmber: * (Y/N) A value of Y makes the stock symbols appear amber
- IDSize: * (5-16) Number of pixels high the ID will be (5, 7, 9, 16)
- IDDBleHigh: * Sets the ID to "Double High" – Each letter is higher
- IDDBleWide: * Sets the ID to "Double wide" – Each letter is wider
- PriceSize: * Same as IDSize, but affects the price
- PriceDbleHigh: * Same as IDDBleHigh, but affects the price
- PriceDbleWide: * Same as IDDBleWide, but affects the price

*Used only with AMS displays

** Used only with Hi*Tech Displays

To adjust these settings, click on the setting, and type the new value in.

Notes:

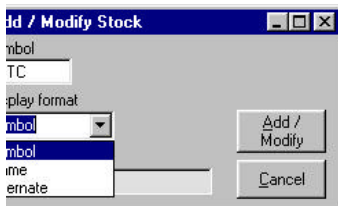
1. The rotation time is not a viable way to speed up or slow down the speed, rotation speed is inherent to each individual sign.
2. Message Mode: Changing this setting is possible, but stock quotes tend to stop making sense when presented in another format.

Setting Up Profiles

The **Profiles** panel is used to define which stocks or indexes will be sent to the displays. Any number of profiles can be created.

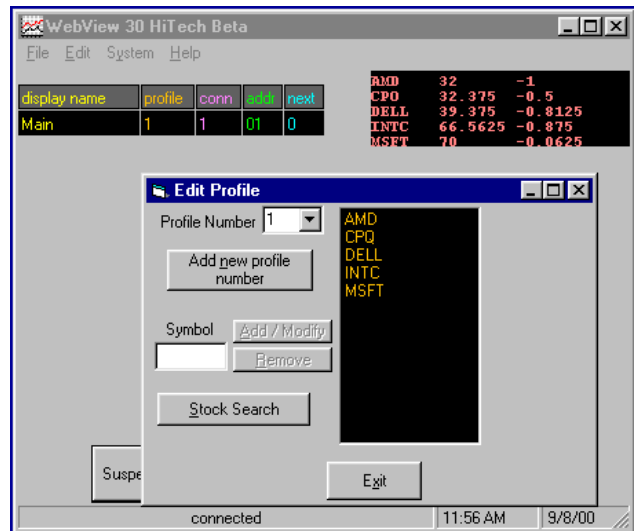
To **Create** a new stock profile:

1. Choose the **Profile Number** text box.
2. Enter a new number.
3. Click the **Add new profile number** button.



To **Add** a stock to a profile:

1. Choose the profile number from the pull down menu.
2. Enter the symbol in the **symbol** text box.
3. Click the Add/Modify button
4. Choose the display that you want.
 - a. Symbol: Displays the symbol. (ie: MSFT)
 - b. Name: Displays the name. (ie: Microsoft)
 - c. Alternate: Displays an alternate.
5. Click the **Add/Modify** button.



If you don't know the symbol (abbreviation) of the stock you are looking for you can search for the stock using InterQuote's online search function. WebViewIQ has this function built into the **Stock Search** button. From the **Edit Profile** window, simply click and enter information as requested following window.

To **Remove** a stock from a profile:

1. Select the stock to be removed
2. Click the **Remove** button

To **Modify** an existing stock.

1. Select the Stock to be modified
2. Click the **Add/Modify** button.

Messaging

WebViewIQ offers two ways to create and display messages, other than stocks on your display. The first is the “**Your Message**” function under the **Edit** menu.

When selecting this option the window that appears can hold up to 4000 characters for a general message (*incl spaces*). The message will appear after the listed stocks are sent.

A second option for AMS displays is “**AlphaNet Plus compatibility**” found under the **System** menu. Enabling this feature allows you to use “AlphaNet plus for Windows” in conjunction with WebView.

Bringing it All Together!

You now know nearly everything you will need to know about WebViewIQ! Chances are you have already displayed stocks on your sign. If not, there are a few remaining things to help you with the program.

1. The “Suspend Update” button: The suspend updates button stops WebViewIQ from sending information to the displays. This can help if you are having trouble changing information in your sign. **You should always suspend updates when making changes to the settings.** Doing so *can* help avoid problems.
2. News: Up-to-date headlines from the Internet. A new feature to WebViewIQ. This scrolls News headlines after your stocks.
3. Periodic Updating: With this feature off, WebViewIQ constantly updates the display with information. Turning it on is generally a good idea if your sign is connected to your LAN. Constant updating can put a heavy load on the network.

Troubleshooting/FAQ

My sign has stopped updating/Has gone blank!

This was an issue with earlier versions of WebView. We have fixed the known causes of the problem, but should you run into this follow these steps:

- 1. Shut down WebViewIQ*
- 2. Reset the memory of the sign. If you are using an AMS sign use the remote to reset the memory. For Hi*Tech signs use [Options] – [Reset Sign] within ComPlay.*
- 3. Restart WebViewIQ*

I have entered a message in “Your Message” why doesn’t it show up?

Make sure the “Display Message” check-box is checked inside the “Your Message” window.

Can I display a logo/Image/Bitmap from within “Your Message”?

No. WebViewIQ does not currently support graphics.

Can I monitor what the sign looks like from another computer?

Currently WebViewIQ does not have any emulation. The only way to monitor the sign is from the computer running WebViewIQ, or to actually watch the sign.

My sign says “Edit Text File Z” when I turn it on.

This is common for AMS displays with AlphaNet plus compatibility turned off. Simply turn on the “AlphaNet plus compatibility” under the system menu.

I can’t display anything on my sign!

Make sure that your com port is not in use. Other program such as AOL and Palm Pilot’s HotSync can tie up your com port. Be sure to turn off these programs and try running WebView again.

Also be sure that the display is properly jumpered for RS232/RS485 communication.

My stock information is not updating/not showing any information.

Make sure you are not behind a firewall, as WebView can have problems pulling information from the internet through one.